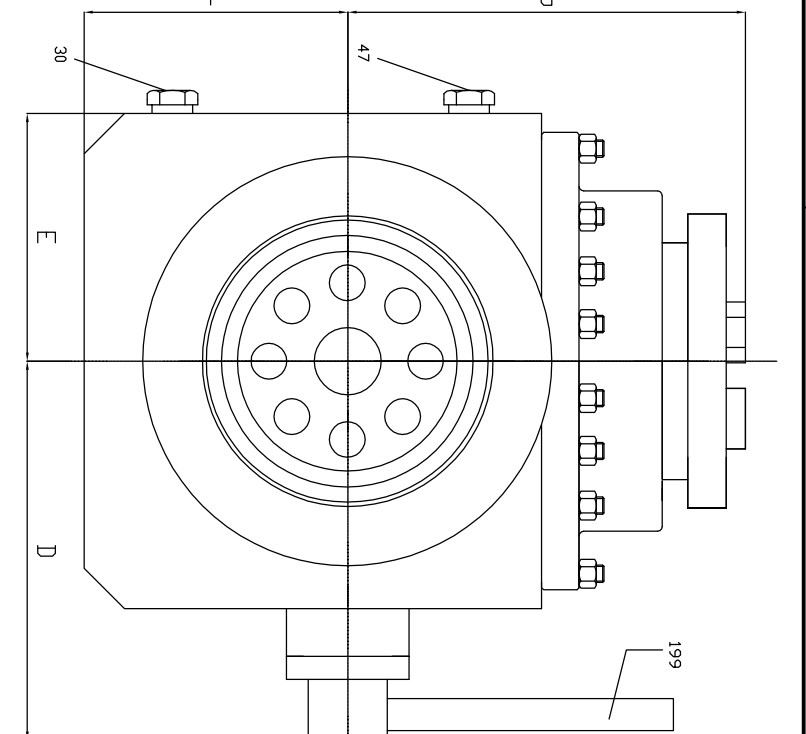
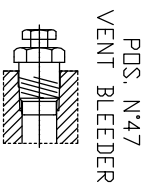


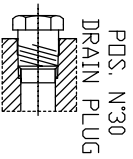
DETAIL REFER I
SHEET 2/2



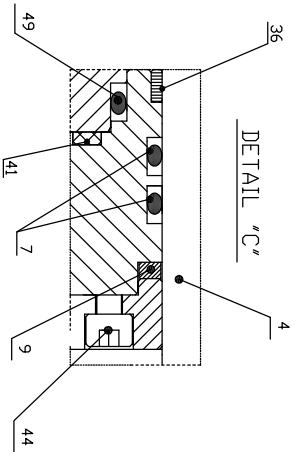
PQS.	PART NAME	MATERIAL
1	BODY	ASTM A350 LF2
2	COVER	ASTM A350 LF2
3	BALL	ASTI 316
4	STEM	UNS S17400
5	SEAT RING+SOFT INSERT	ASTI 316 + DELRIN
6	BODY O-RING	BUNA-N
7	STEM O-RING	NITRILE
9	FIRE SAFE GASKET	GRAPHITE
13	FIRE SAFE GASKET	GRAPHITE
14	STUD BOLT	ASTM A320 L7M + PTFE COATED
19	BODY PIN	ASTI 4140
22	STUD BOLT NUTS	ASTM A194 7M + PTFE COATED
30	DRAIN PLUG	ASTI 316
31	SEAT O-RING	BUNA-N
32	SPRING	INCONEL X-750
36	STEM BEARING	ASTI 316/PTFE
41	FIRE SAFE GASKET	GRAPHITE
43	CAP SCREW	ASTM A320 L7M + PTFE COATED
44	CAP SCREW	ASTM A320 L7M + PTFE COATED
45	THRUST BEARING	ASTI 316/PTFE
46	STEM KEY	ASTI 1040
47	VENT BLEEDER	ASTI 316
49	BONNET O-RING	BUNA-N
53	BONNET	ASTM A350 LF2
78	RING FOR SPRING	ASTM A350 LF2
82	STEM WASHER	ASTI 316/PTFE
142	GLAND FLANGE	ASTM A350 LF2
189	PIN	ASTI 1040
190	LIFTING LUG	CARB. STEEL + ZINC
199	LEVER	CARB. STEEL + ZINC
200	O-RING	BUNA-N
201	PIG OUTLET LIP SEAL	RPTFE+ELGILDY
202	WASHER	ASTI 316
203	SCREW	ASTM A320 L7M
204	PIG STOPPER	ASTM A182 F51
205	SCREW	ASTM A320 L7M + PTFE COATED
206	FLANGE	ASTM A350 LF2
207	FLANGE	UNS S31803
208	HAND LEVER PIPE	ASTM A350 LF2



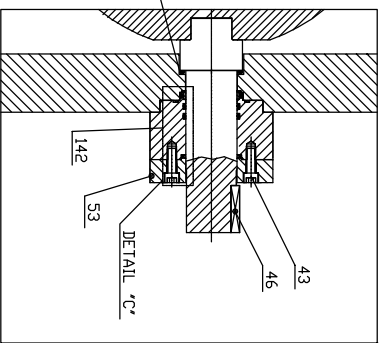
POS. N°47
VENT BLEEDER



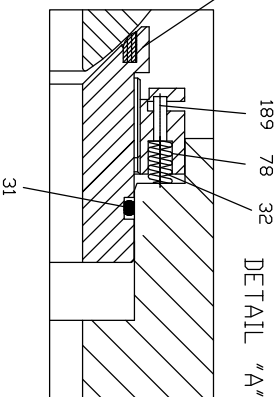
POS. N°30
DRAIN PLUG



DETAIL "C"



DETAIL "C''

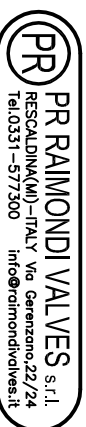


DETAIL "A"

NOTE:
- Dimension in mm, weight in kg
- Flanges according to ASME B16.5

DN	CLASS	A-RTJ	B	C	D	E	F	G	WEIGHT-RTJ	VDS
6"	ASME	686	139,76	380	254	191	165	400	(Kg)	PBV-4302

0	FIRST ISSUE	17-04-21		
R	ISSUE OR REVISION	DATE	BY	CHKD
CROSS SECTIONAL ASSEMBLY DRAWING				
PIGGING BALL VALVE - TRUNNION BALL				
TOP ENTRY BODY TYPE - DN 6" ASME 900 RTJ				



DRAWING N°	GAD-21324
SHEET	1/2
REV.	0